

MapIt™ Fault Distance Monitor

900 MHz Stand-Alone Radio Modem

Read Fault Location and Plan Switching without Getting out of Truck

Extend Your Outage/Workflow Management System To Include The New Fault Distance Monitor, Which Can Significantly Reduce Customer Minutes Of Service Interruption Caused By Underground Cable Faults.

The Stand-Alone Radio Modem and Software Integrates MapIt™ Fault Distance Monitors into Existing Outage/Workflow Management Systems.

Standard Features

- **Utilize Existing Resources** - Integrates into existing Outage/Workflow Management Systems, accelerating return on investment. Common interface (no training). Figure 3 shows a typical fault location interface.
- **Remote Interrogation From Truck** – Long transmission distance can access rear lot, sub-surface and hard to access locations without getting out of truck. Visual contact with transformer is not required. Figure 2 illustrates the overall system application.
- **True Peer-To-Peer Network** – No network infrastructure required. Unique Vendor Identification filtering technology ignores unsolicited messages.
- **Spread Spectrum Technology** – Frequency hopping technology that operates over license-free ISM band.
- **Plug-and-Communicate** – No configuration required.
- **Interface Software** - Includes interface software for communications and control between field installed MapIt™ Fault Distance Monitors and Outage/Workflow Management software.



Figure 1. MapIt™ Fault Distance Monitor 900 MHz Stand-Alone Radio Modem



Figure 2. Overall Radio Link System Application

Specifications

Range	Up to 1500 feet (457 m)
Power Supply	7 – 18 VDC @ 200 mA (AC to DC adaptor included)
Operating Temperature	-40°C to +85°C
Computer Interface	RS-232 Cable with 9 Pin DB Connectors (included)
Software	Microsoft Windows DLL (included)
Certifications	FCC Part 15.247, and Industry Canada
Frequency	902 – 928 MHz
Antenna	½ Wave Dipole (2.1 dBi)
Size	2.75" x 5.50" x 1.124" (7.9 cm x 13.90 cm x 3.80 cm)

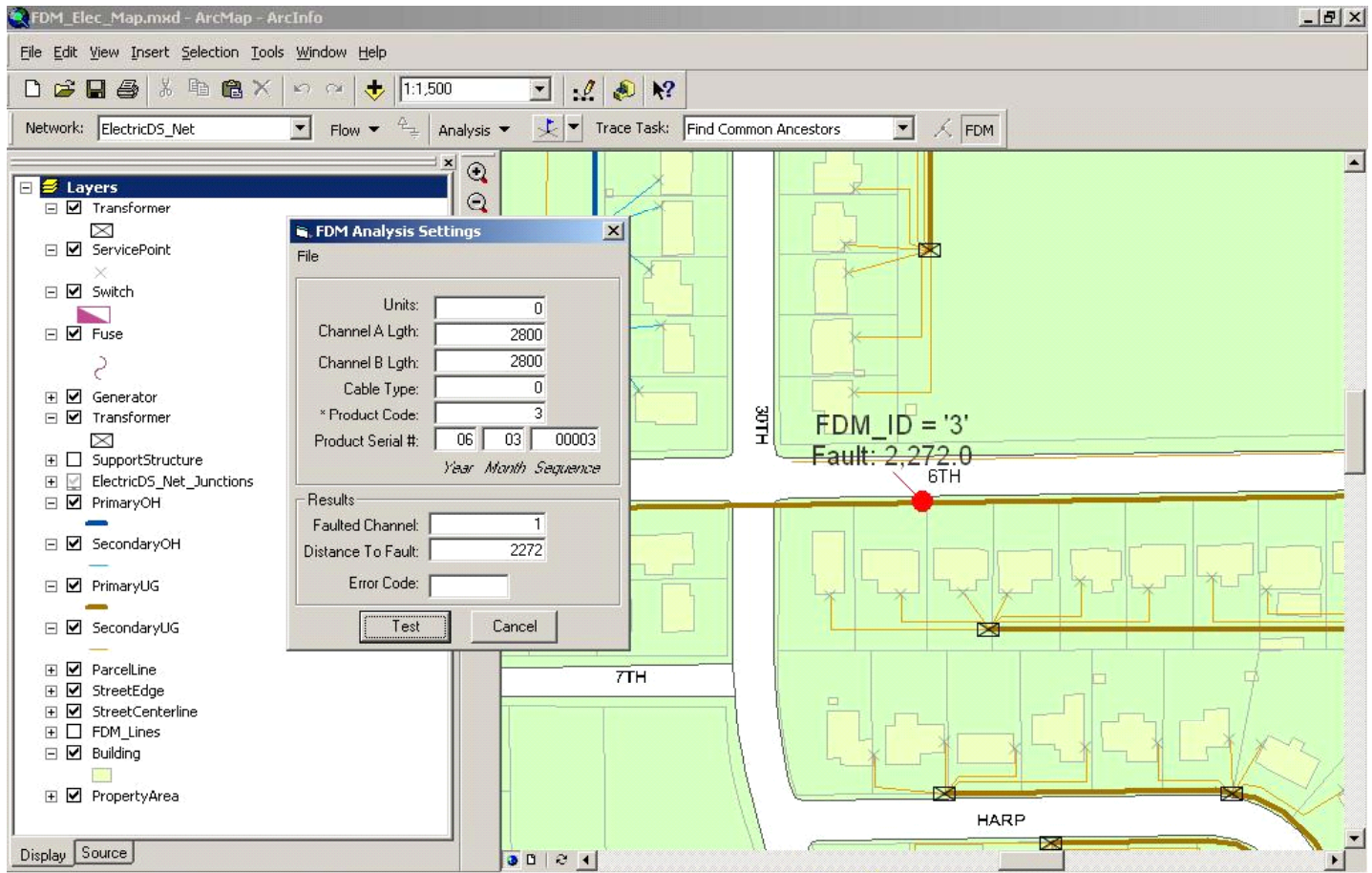


Figure 3. Outage Management System Circuit Map Indicating Faulted Location (ESRI Integration)

Ordering Information

Available Part Numbers:

FDM-MODEM-900M – MapIt™ Fault Distance Monitor Standalone 900 MHz Radio Modem

For more information contact:

sales@cable-fault.com

support@cable-fault.com

Trademarks and Service Marks. All trademarks and service marks are the property of the respective owners and are hereby recognized. Use of this document shall not be regarded as affecting the validity of any trademark or service mark. All information contained herein is deemed accurate and reliable, but not guaranteed.